

MEASURED POURERS WITH COLLAR

SMOOTH AND ACCURATE POUR FOR CONSISTENT DRINKS.
ACRYL MATERIAL.

ITEM NO	DESCRIPTION	PACKING
MP-1000	10ML	1DOZ/ BOX,12DOZ/ CTN/1.98'
MP-1500	15ML	1DOZ/ BOX,12DOZ/ CTN/1.98'
MP-2000	20ML	1DOZ/ BOX,12DOZ/ CTN/1.98'
MP-2500	25ML	1DOZ/ BOX,12DOZ/ CTN/1.98'
MP-3000	30ML	1DOZ/ BOX,12DOZ/ CTN/1.98'
MP-4000	40ML	1DOZ/ BOX,12DOZ/ CTN/1.98'
MP-5000	50ML	1DOZ/ BOX,12DOZ/ CTN/1.98'



MEASURED POURERS WITHOUT COLLAR

SMOOTH AND ACCURATE POUR FOR CONSISTENT DRINKS.
ACRYL MATERIAL.

ITEM NO	DESCRIPTION	PACKING
MP-1001	10ML	1DOZ/ BOX,12DOZ/ CTN/1.98'
MP-1501	15ML	1DOZ/ BOX,12DOZ/ CTN/1.98'
MP-2001	20ML	1DOZ/ BOX,12DOZ/ CTN/1.98'
MP-2501	25ML	1DOZ/ BOX,12DOZ/ CTN/1.98'
MP-3001	30ML	1DOZ/ BOX,12DOZ/ CTN/1.98'
MP-4001	40ML	1DOZ/ BOX,12DOZ/ CTN/1.98'
MP-5001	50ML	1DOZ/ BOX,12DOZ/ CTN/1.98'



FREE FLOW POURERS

PLASTIC ,ECONOMY

ITEM NO	DESCRIPTION	PACKING
FP-1006	BLUE	1DOZ/ BOX,80DOZ/ CTN/0.67'
FP-1007	KELLY GREEN	1DOZ/ BOX,80DOZ/ CTN/0.67'
FP-1008	MINT GREEN	1DOZ/ BOX,80DOZ/ CTN/0.67'
FP-1009	SPARKLE GREEN	1DOZ/ BOX,80DOZ/ CTN/0.67'
FP-1010	CLEAR	1DOZ/ BOX,80DOZ/ CTN/0.67'
FP-1011	WHITE	1DOZ/ BOX,80DOZ/ CTN/0.67'
FP-1012	SPARKLE RED	1DOZ/ BOX,80DOZ/ CTN/0.67'
FP-1013	FLOURESCENT RED	1DOZ/ BOX,80DOZ/ CTN/0.67'
FP-1014	MODENA	1DOZ/ BOX,80DOZ/ CTN/0.67'
FP-1015	BLACK	1DOZ/ BOX,80DOZ/ CTN/0.67'



WHISKEY POURERS

PLASTIC,NO COLLAR.

ITEM NO	DESCRIPTION	PACKING
WP-4250B	BLUE SPOUT	1DOZ/ BOX,30DOZ/ CTN/1.04'
WP-4250G	GREEN SPOUT	1DOZ/ BOX,30DOZ/ CTN/1.04'
WP-4250R	RED SPOUT	1DOZ/ BOX,30DOZ/ CTN/1.04'
WP-4250BL	BLACK SPOUT	1DOZ/ BOX,30DOZ/ CTN/1.04'



WHISKEY POURERS

PLASTIC WITH COLLAR.

ITEM NO	DESCRIPTION	PACKING
WP-4260R	RED SPOUT	1DOZ/ BOX, 48DOZ/ CTN
WP-4260B	BLACK SPOUT	1DOZ/ BOX, 48DOZ/ CTN
WP-4260C	CLEAR SPOUT	1DOZ/ BOX, 48DOZ/ CTN



CONTINUOUS FLOW POURERS

PLASTIC

ITEM NO	DESCRIPTION	PACKING
FP-2010	CLEAR	1DOZ/BOX, 48DOZ/CTN
FP-3010	CHROME	1DOZ/BOX, 48DOZ/CTN



LIQUOR POURER

STAINLESS STEEL NOZZLE WITH A PLASTIC CORK AND TAPERED SPOUT.

ITEM NO	DESCRIPTION	PACKING
LP-0004	LIQUOR POURER	1DOZ/BOX,30DOZ/CTN/1.10'



METAL POURERS

CHROME TAPERED WITH FLIP TOP.

ITEM NO	DESCRIPTION	PACKING
TP-4500	CHROME METAL	1DOZ/BOX,30DOZ/CTN/0.78'



ECONOMY FREE POURER

EP-3000	CLEAR PLASTIC,ECONOMY	1DOZ/POLYBAG,30DOZ/CTN
---------	-----------------------	------------------------



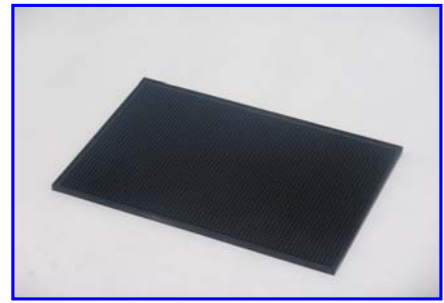
BAR MAT

BAR MAT & SHOT GLASS HOLDER, FLEXIBLE THERMOPLASTIC RUBBER.EASILY CLEANED,COLOR: BLACK OR BROWN.

ITEM NO	DESCRIPTION	PACKING
BM-2335	O.A.LENGTH: 23-1/2" x 3-1/4"	1PC/POLYBAG,12PCS/CTN/0.47'
BM-2735	O.A.LENGTH: 26-1/2" x 3-1/4"	1PC/POLYBAG,12PCS/CTN/0.46'



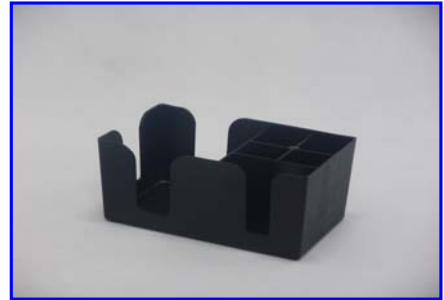
ITEM NO	DESCRIPTION	PACKING
BM-1218	O.A.LENGTH: 12" x 18"	1PC/POLYBAG,12PCS/CTN/0.75'



BAR CADDY

BLACK PLASTIC WITH COMPARTMENT FOR NAPKINS,STIR STICKS AND OTHER DECORATIONS.

ITEM NO	DESCRIPTION	PACKING
BC-0694	BARN ORGANIZER,6 COMPT	1PC/POLYBAG,24PCS/CTN/3.70'



GLASS RIMMER

THREE TRAY RIMMER WITH SALT TRAY,SUGAR TRAY AND SPONGE FOR DAMPENING THE GLASS RIM.

ITEM NO	DESCRIPTION	PACKING
GR-0006	GLASS RIMMER	1PC/BOX,24PCS/CTN/1.92'



CONDIMENT DISPENSERS

BLACK BASE,THREE MODELS TO CHOOSE FROM.

ITEM NO	DESCRIPTION	PACKING
CD-0064	INDIVIDUAL DISPENSER	1PC/BOLYBAG,12PCS/CTN/3.66'
CD-4015	DISPENSER WITH 4-1/2 PINT INSERTS	1PC/BOLYBAG,12PCS/CTN/3.66'
CD-4016	REPLACEMENT INSERTS,1-1/2PINT CAPACITY	120PCS/CTN
CD-6001	DISPENSER WITH 6-1PINT INSERTS	1PC/BOLYBAG,12PCS/CTN/3.66'
CD-6002	REPLACEMENT INSERTS,1PINT CAPACITY	180PCS/CTN



STAINLESS STEEL FRAME & HINGE WITH CLEAR PLASTIC LID.

ITEM NO	DESCRIPTION	PACKING
SCD-03	3 COMPARTMENT	12PCS/CTN/1.74'
SCD-04	4 COMPARTMENT	12PCS/CTN/2.22'
SCD-05	5 COMPARTMENT	12PCS/CTN/2.78'
SCD-06	6 COMPARTMENT	12PCS/CTN/3.34'



FLAIR BOTTLE

ABS MATERIAL, THE OVAL SIZE: 77 x 290MM;

ITEM NO	DESCRIPTION	PACKING
FB-729W	WHITE	24PCS/CTN/1.82'
FB-729R	RED	24PCS/CTN/1.82'
FB-729Y	YELLOW	24PCS/CTN/1.82'
FB-729B	BLUE	24PCS/CTN/1.82'
FB-729G	GREEN	24PCS/CTN/1.82'
FB-729O	ORANGE	24PCS/CTN/1.82'
FB-729P	PHOSPHORESCENT	24PCS/CTN/1.82'



STORER' N POUR

AVAILABLE FOR BROWN,RED,YELLOW,BLUE,GREEN,ORANGE,WHITE COLORS, EASY REMOVABLE SPOUT;

ITEM NO	DESCRIPTION	PACKING
SN-05	0.5L	36PCS/CTN/2.29'
SN-10	1L	48PCS/CTN/3.31'
SN-20	2L	36PCS/CTN/4.23'
SN-25	2.5L	36PCS/CTN/4.83'



CHECK TRAYS

PLASTIC, IMPRINTED " THANK YOU";

ITEM NO	DESCRIPTION	PACKING
RH-1	BLACK	100PCS/CTN/0.60'



BAR STRAINER

18-8 STAINLESS STEEL.

ITEM NO	DESCRIPTION	PACKING
BS-24	2 PRONGS,0.8MM	12PCS/BOX,288PCS/CTN
BS-25	4 PRONGS,0.5MM	12PCS/BOX,288PCS/CTN



CHAMPAGNE STOPPER

ITEM NO	DESCRIPTION	PACKING
CS-3001	CHAMPAGNE STOPPER, CHROME PLATED	50 PCS/BOX, 250 PCS/CTN/1.23'



WAITER'S CORKSCREWS



ITEM NO	DESCRIPTION	PACKING
CS-1001	STAINLESS STEEL WORM, CAP LIFTER AND CURVED BLADE	12 PCS/BOX, 144 PCS/CTN/0.4'
CS-1002	PLASTIC OVER CHROMED STEEL, STAINLESS STEEL WORM, CAP LIFTER AND CURVED BLADE WITH SERRATION	12 PCS/BOX, 144 PCS/CTN/0.4'



CS-1003	STAINLESS STEEL WORM, CAP LIFTER AND CURVED BLADE	12 PCS/BOX, 144 PCS/CTN/0.4'
CS-1004	PLASTIC OVER STEEL, STAINLESS STEEL WORM, CAP LIFTER AND CURVED BLADE	12 PCS/BOX, 144 PCS/CTN/0.4'

CORKSCREWS

LACQUERED HARDWOOD HANDLE



ITEM NO	DESCRIPTION	PACKING
CS-1007	4-1/4" O.A. LENGTH, TEMPERED STEEL WORM, CHROME PLATED	12 PCS/BOX, 144 PCS/CTN/1.3'
CS-1008	5-1/4" O.A. LENGTH, NICKEL PLATED	12 PCS/BOX, 144 PCS/CTN/1.3'

PREMIUM 3-PIECE BAR SHAKERS SET

18-8 STAINLESS STEEL, MIRROR POLISHED,
GIFT BOXED

ITEM NO	DESCRIPTION	PACKING
BS-2020	200 ml	12 PCS/INNER BOX, 72 PCS/CTN/1.85'
BS-2025	250 ml	12 PCS/INNER BOX, 72 PCS/CTN/2.80'
BS-2035	350 ml	12 PCS/INNER BOX, 72 PCS/CTN/3.07'
BS-2055	550 ml	12 PCS/INNER BOX, 72 PCS/CTN/5.71'
BS-2075	750 ml	12 PCS/INNER BOX, 48 PCS/CTN/4.33'



PREMIUM 3-PIECE BAR SHAKERS SET

18-8 STAINLESS STEEL, MIRROR POLISHED,
0.8 mm THICKNESS, GIFT BOXED

ITEM NO	DESCRIPTION	PACKING
BS-2103	350 ml	12 PCS/INNER BOX, 36 PCS/CTN/1.8'
BS-2105	550 ml	12 PCS/INNER BOX, 36 PCS/CTN/2.90'
BS-2107	750 ml	12 PCS/INNER BOX, 36 PCS/CTN/3.1'
BS-2110	1 Liter	12 PCS/INNER BOX, 36 PCS/CTN/4.2'



PREMIUM 3-PIECE

18-8 STAINLESS STEEL, MIRROR POLISHED,

ITEM NO	DESCRIPTION	PACKING
BS-2235	350 ml	12 PCS/INNER BOX, 72 PCS/CTN
BS-2255	550 ml	12 PCS/INNER BOX, 72 PCS/CTN
BS-2275	750 ml	12 PCS/INNER BOX, 48 PCS/CTN



PROFESSIONAL WING STYLE CORKSCREWS

ITEM NO	DESCRIPTION	PACKING
CS-2001	ZINC ALLOY	12PCS/BOX,144PCS/CTN/1.57'



ITEM NO	DESCRIPTION	PACKING
CS-2002	CHROME PLATED	12PCS/BOX,144PCS/CTN/1.57'



WALL MOUNTED BOTTLE OPENER

CHROME PLATED STEEL.

ITEM NO	DESCRIPTION	PACKING
WM-3580	3-5/8" O.A.LENGTH	24PCS/BOX, 288PCS/CTN



RING BOTTLE OPENER

CHROME PLATED STEEL.

ITEM NO	DESCRIPTION	PACKING
BOR-070	PRODUCT DIA: 20MM	50PCS/BOX, 1000PCS/CTN/0.45'
BOR-080	PRODUCT DIA: 22MM	50PCS/BOX, 1000PCS/CTN/0.45'
BOR-090	PRODUCT DIA: 24MM	50PCS/BOX, 1000PCS/CTN/0.45'



CAN PUNCH & BOTTLE OPENER

STEEL WITH NICKEL PLATED.

ITEM NO	DESCRIPTION	PACKING
BO-1004	4" LENGTH	60PCS/BOX, 720PCS/CTN/0.71'



KING SIZE CAN PUNCH & BOTTLE OPENER

STEEL WITH NICKEL PLATED.

ITEM NO	DESCRIPTION	PACKING
BO-1006	6-3/4" LENGTH	12PCS/BOX, 120PCS/CTN/0.45'



FLAT BOTTLE OPENER

18-8 STAINLESS STEEL.CONVENIENT,FLAT SHAPE.

ITEM NO	DESCRIPTION	PACKING
BO-1007	7" x 2-1/2", 3.0MM	12PCS/BOX,120PCS/CTN/0.17'
BO-1017	7" x 2-1/3", 2.5MM	12PCS/BOX,120PCS/CTN/0.17'
BO-2007	7" x 2-1/3", 2.0MM WIH PLASTIC GRIPS	12PCS/BOX,120PCS/CTN/0.17'



CHAMPAGNE COOLER

THICKNESS: 0.6MM;

MATERIAL: STAINLESS STEEL;

ITEM NO	SIZE	PACKING
CC-3522	35.3 x 22.5 CM	1PC/BOX, 2PCS/CTN/2.34'
CC-3925	39 x 25 CM	1PC/BOX, 2PCS/CTN/3.29'



WINE BUCKET & STANDS

ITEM NO	DESCRIPTION	PACKING
SWB-0008	BUCKET ONLY	1PC/BOX, 8PCS/CTN/4.7'
SWB-0018	STAND ONLY	2PCS/BOX, 6PCS/CTN/2.03'



WINE BUCKET & STANDS

ITEM NO	DESCRIPTION	PACKING
SWB-0075	BUCKET ONLY, 18.5 x 20.2CM	12PCS/CTN/2.55'
SWB-1075	STAND ONLY, 19.5 x 30 x 59CM, 2.0KGS	4PCS/CTN/9.60'
SWB-2075	STAND ONLY, 18.5 x 25 x 60CM, 1.7KGS	4PCS/CTN/7.01'



PLATED OVERHEAD GLASS RACK

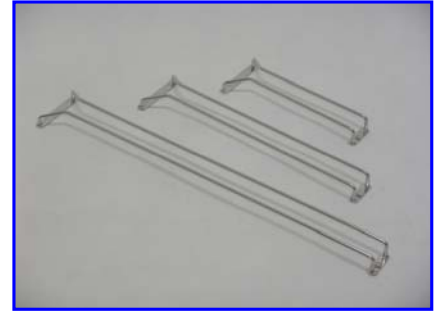
ITEM NO	DESCRIPTION	PACKING
GR-8024	18"x24"x4", CHROME PLATED	6PCS/CTN/8.63'
GR-8124	18"x24"x4", BRASS PLATED	6PCS/CTN/8.63'
GR-8224	18"x24"x4", BLACK POWDER PAINTING	6PCS/CTN/8.63'
GR-8036	18"x36"x4", CHROME PLATED	6PCS/CTN/12.33'
GR-8136	18"x36"x4", BRASS PLATED	6PCS/CTN/12.33'
GR-8236	18"x36"x4", BLACK POWDER PAINTING	6PCS/CTN/12.33'
GR-8048	18"x48"x4", CHROME PLATED	6PCS/CTN/16.71'
GR-8148	18"x48"x4", BRASS PLATED	6PCS/CTN/16.71'
GR-8248	18"x48"x4", BLACK POWDER PAINTING	6PCS/CTN/16.71'



GLASS HANGER

FOR GLASS STEMWARE-INCLUDES MOUNTING SCREWS

ITEM NO	DESCRIPTION	PACKING
GH-1000	10", CHROME PLATED	12PCS/BOX, 72PCS/CTN/2.57'
GH-1001	10", BRASS PLATED	12PCS/BOX, 72PCS/CTN/2.57'
GH-1600	16", CHROME PLATED	12PCS/BOX, 72PCS/CTN/3.95'
GH-1601	16", BRASS PLATED	12PCS/BOX, 72PCS/CTN/3.95'
GH-2400	24", CHROME PLATED	12PCS/BOX, 48PCS/CTN/3.63'
GH-2401	24", BRASS PLATED	12PCS/BOX, 48PCS/CTN/3.63'



ITEM NO	DESCRIPTION	PACKING
GH-1002	10" , ALL STAINLESS STEEL	12PCS/BOX, 72PCS/CTN/2.57'
GH-1602	16" , ALL STAINLESS STEEL	12PCS/BOX, 72PCS/CTN/3.95'
GH-2402	24" , ALL STAINLESS STEEL	12PCS/BOX, 48PCS/CTN/3.63'

TRAY STAND

CHROME-PLATED 1-1/8" DIAMETER TUBULAR STEEL. REPLACEABLE PLASTIC GUIDES AND BLACK WEBBING.

ITEM NO	DESCRIPTION	PACKING
TS-1001	20"x 16-1/4", STANDS 29-1/2" TALL	6 PCS/CTN/4.72'
TS-1002	20"x 15", STANDS 31" TALL	6PCS/CTN/4.85'
TS-1012	20"x 15", STANDS 31" TALL WITH 3 STRAPS	6PCS/CTN/4.85'
TS-1003	36" HEIGHT DELUXE CHROME PLATED	6PCS/CTN/5.40'



STEEL WITH POWDER COATING

ITEM NO	DESCRIPTION	PACKING
TS-2001	BLACK POWDER COATING, 20"x 16-1/4", STANDS 29-1/2" TALL	6 PCS/CTN/4.72'
TS-2002	BLACK POWDER COATING, 20"x 15", STANDS 31" TALL	6PCS/CTN/4.85'
TS-2003	BLACK POWDER COATING, 36" HEIGHT DELUXE	6PCS/CTN/5.40'
TS-2011	SILVER POWDER COATING, 20"x 16-1/4", STANDS 29-1/2" TALL	6PCS/CTN/4.72'
TS-2012	SILVER POWDER COATING, 20"x 15", STANDS 31" TALL	6PCS/CTN/4.85'
TS-2013	SILVER POWDER COATING, 36" HEIGHT DELUXE	6PCS/CTN/5.40'



CHROME PLATED WITH CURVED TUBE.

ITEM NO	DESCRIPTION	PACKING
TS-3001	31-1/2" TALL	6 PCS/CTN/5.16'



LUGGAGE STAND

CHROME PLATED STEEL TUBE.

ITEM NO	DESCRIPTION	PACKING
TS-4001	LUGGAGE STAND WITH 4 STRAPS	6 PCS/CTN/4.2'



LUGGAGE STAND

CHROME PLATED STEEL TUBE.

ITEM NO	DESCRIPTION	PACKING
TS-5001	LUGGAGE STAND WITH HIGH BACK	6 PCS/CTN

